



Headline Statistics

WCWSS DAM STORAGE
(%)

92.6

WEEKLY DAM LEVEL CHANGE
(%)

0.80

AVERAGE TOTAL
DAILY WATER USE
(MLD)

820

Water Resource Status

WATER RESOURCE STATUS	MEANING OF CURRENT STATUS
Wise Water Use	<p>'Continued water wise use encouraged as City reviews marginally lower seasonal rainfall volumes, cautioning possible early drought cycle'</p> <p>The City is currently reviewing the water resource status due to lower than normal rainfall in the catchment areas resulting in marginally lower than expected dam levels (as shown on Page 3).</p> <p>There is no immediate reason for concern and no expected restrictions for the next year. The different drought risk levels are discussed in the Water Outlook 2022.</p>

Water Production from Different Sources

MAJOR DAMS
(MLD)

794

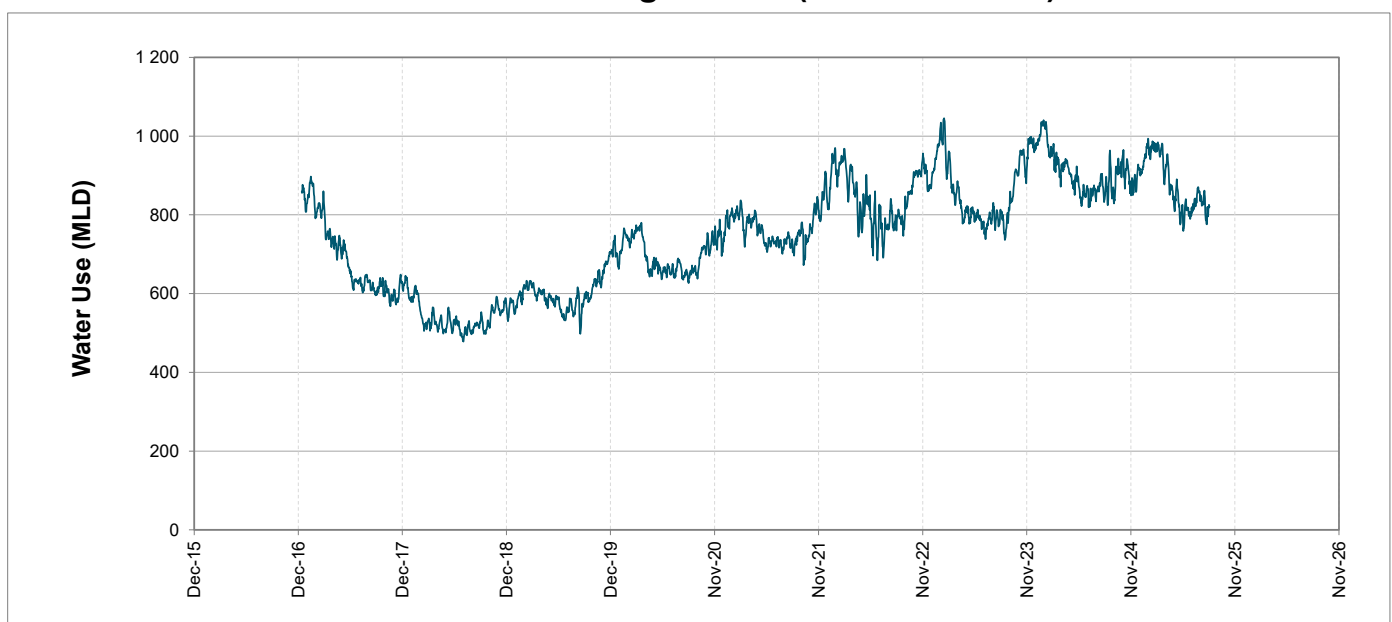
MINOR DAMS
(MLD)

20

GROUND WATER
AND SPRINGS
(MLD)

6

Overall Water Usage Trend (2010 - Present)



WCWSS means Western Cape Water Supply System

MLD means million litres per day

More information on Water Saving and Restrictions is available on the City of Cape Town's 'ThinkWater' website

Water Stored in Major Dams (WCWSS)

Overall Percentage Full

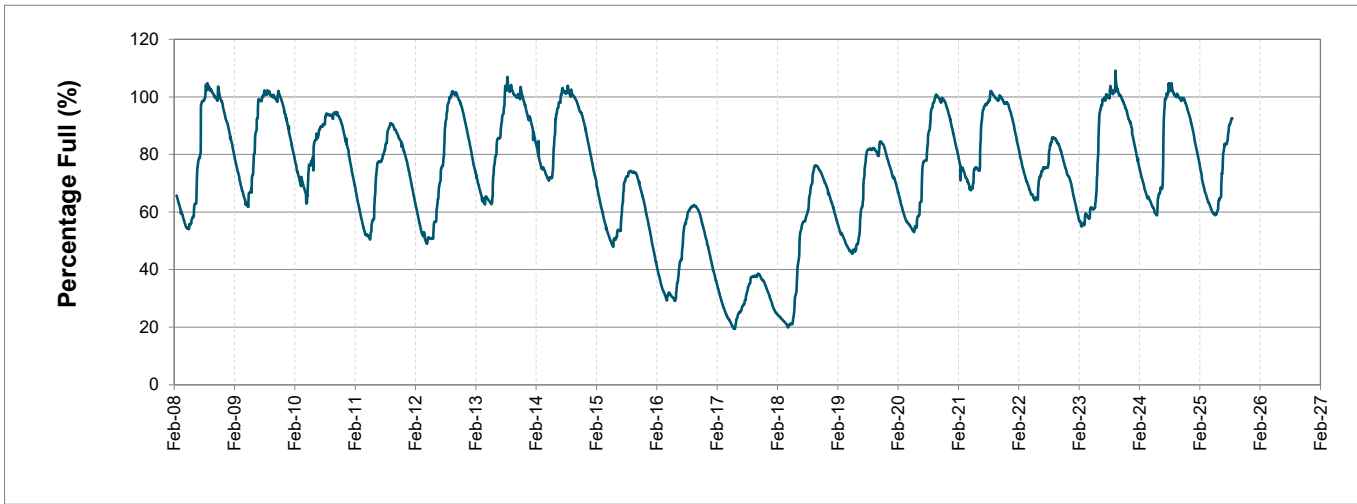
92.6%

Weekly Change

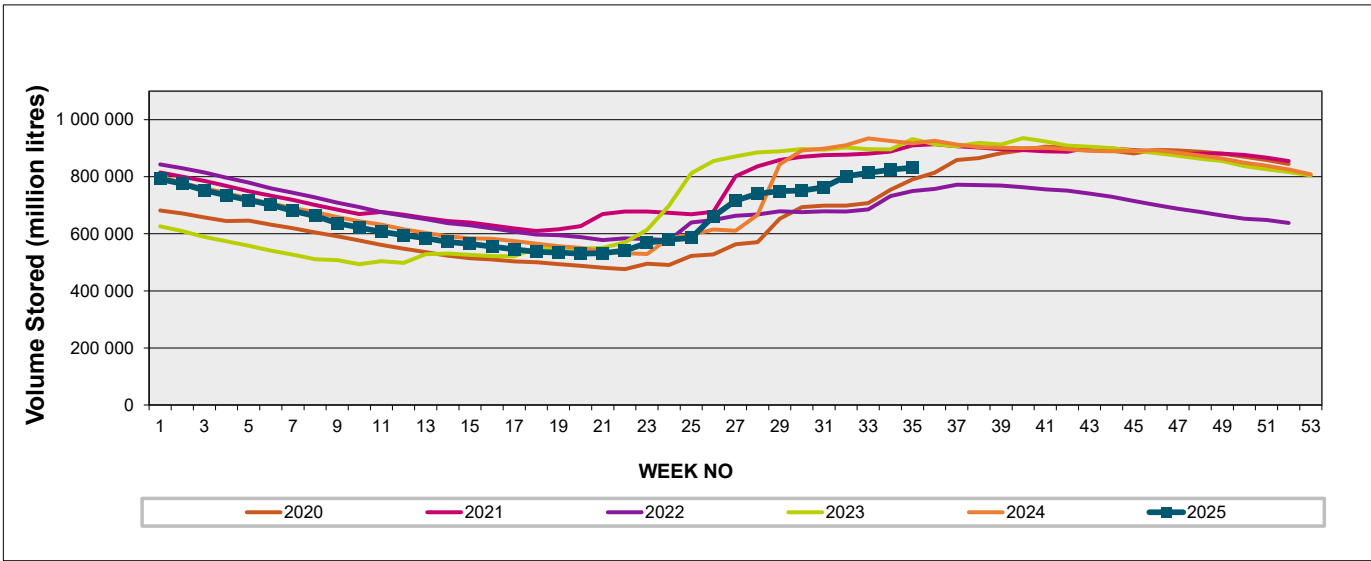
0.8%

MAJOR DAMS (WCWSS)	STORAGE						
	CAPACITY	%	%	%	%	%	%
	MI	01 September 2025	Previous week	2024	2023	2022	2021
BERG RIVER	130 010	100.1	100.9	100.7	100.6	100.1	101.4
STEENBRAS LOWER	33 517	100.4	100.2	102.6	102.2	94.2	101.1
STEENBRAS UPPER	31 767	102.2	100.7	103.1	96.7	92.0	93.6
THEEWATERSKLOOF	480 188	87.0	86.2	104.4	103.3	83.6	104.5
VOËLVLEI	164 095	99.5	97.2	103.9	100.9	70.1	97.8
WEMMERSHOEK	58 644	93.0	93.3	99.9	99.9	82.0	100.0
TOTAL STORED	898 221	831 808	824 770	928 473	915 991	755 441	916 486
% STORAGE		92.6%	91.8%	103.4%	102.0%	84.1%	102.0%

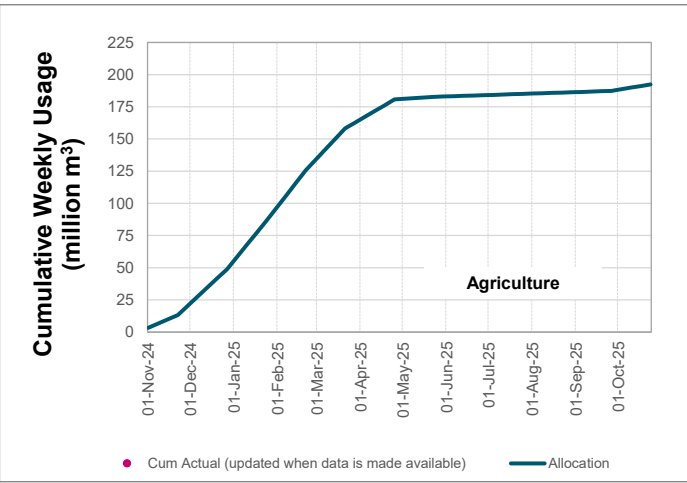
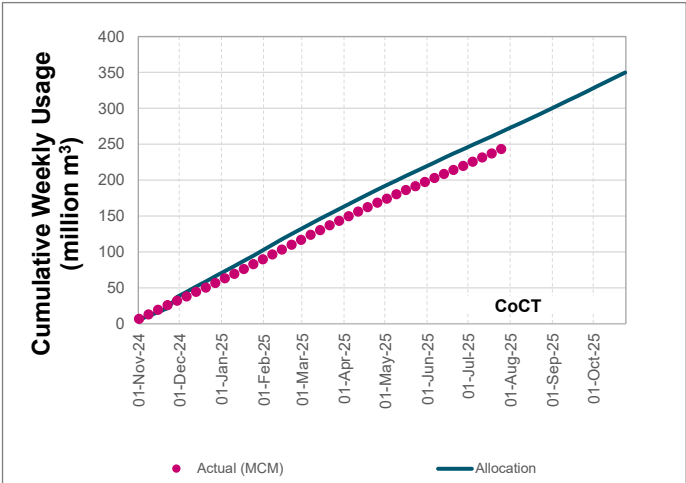
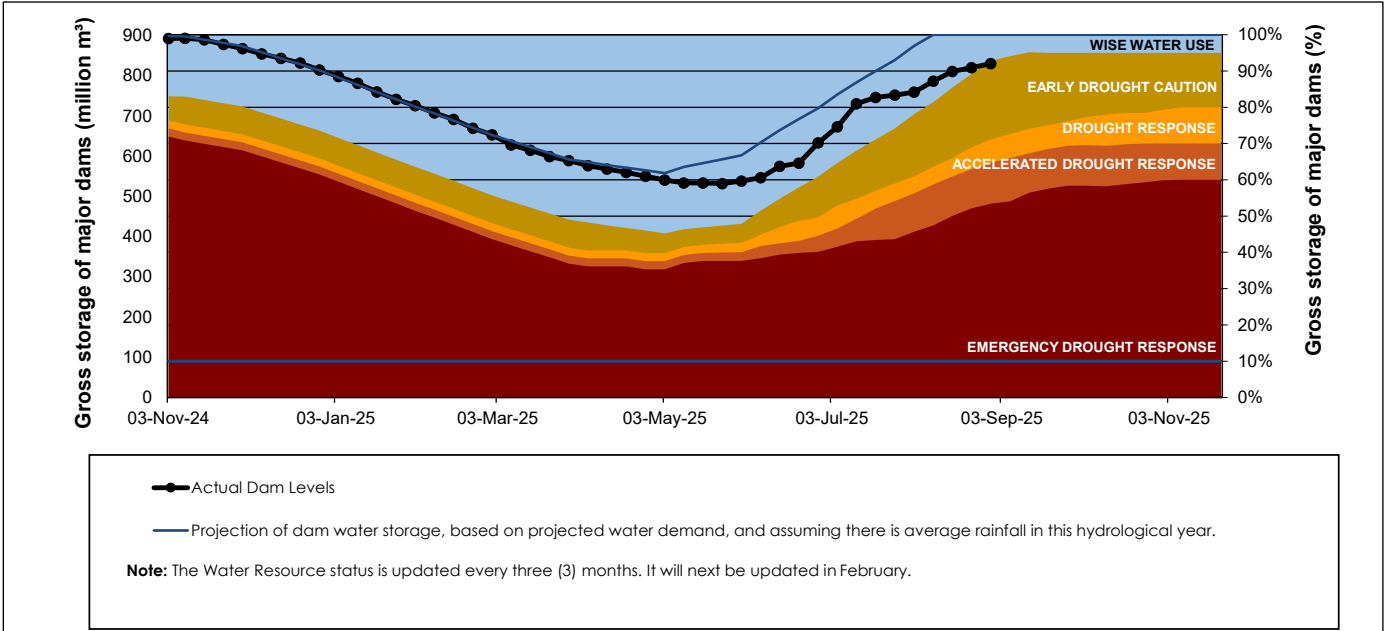
WCWSS Storage Record (2008 - Present)



WCWSS Comparative Storage Graph



Projected WCWSS Dam Storage Levels



Water Stored in Minor Dams

Overall Percentage Full	85.9	Weekly Change	-2.25
-------------------------	------	---------------	-------

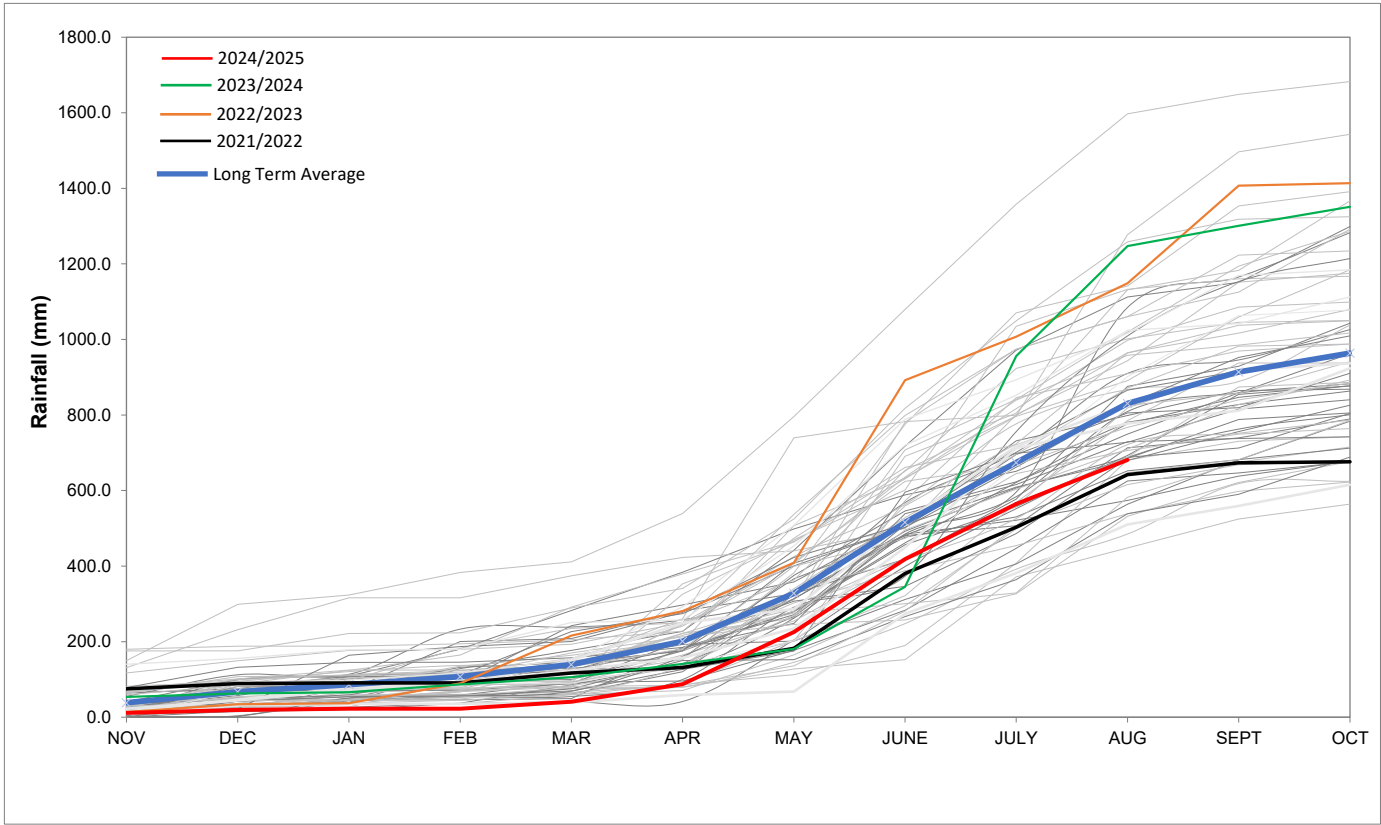
MINOR DAMS	STORAGE						
	CAPACITY	%	%	%	%	%	%
	MI	01 September 2025	Previous week	2024	2023	2022	2021
ALEXANDRA (Table Mountain)	126	81.1	83.5	ND	99.3	98.7	57.3
DE VILLIERS (Table Mountain)	243	101.2	100.7	ND	100.2	99.5	95.9
HELY-HUTCHINSON (Table Mount	925	99.8	100.0	ND	100.8	99.8	101.4
KLEINPLAATS (Simon's Town)	1 368	68.5	68.7	95.8	100.2	73.4	100.0
LAND-EN-ZEEZICHT (Helderberg)	451	100.0	100.0	100.0	99.4	85.3	100.0
LEWIS GAY (Simon's Town)	182	100.9	100.9	100.9	100.9	42.7	100.9
VICTORIA (Table Mountain)	128	71.1	67.0	ND	101.5	100.8	102.3
WOODHEAD (Table Mountain)	954	89.9	100.2	ND	100.2	97.3	100.5
Total Stored	4 377	3760.9	3859.5	ND	4338.9	3784.5	4280.5
Percentages stored		85.9	88.2	ND	99.1	86.5	97.8

Rainfall Recorded

RAINFALL (mm)	25-Aug	26-Aug	27-Aug	28-Aug	29-Aug	30-Aug	31-Aug	Sept	
								Total*	LT Average
Blackheath Upper	0.0	0.0	0.0	0.0	0.0	0.0	0.0	0.0	43.5
Brooklands	0.0	0.0	0.0	0.0	0.0	0.0	0.0	0.0	85.7
Newlands	0.0	0.0	0.0	0.0	0.0	0.0	0.0	0.0	168.3
Steenbras	0.0	0.0	0.0	0.0	0.0	0.0	0.0	0.0	83.6
Table Mountain (Woodhead)	0.0	0.0	0.0	0.0	5.0	0.0	0.0	0.0	147.2
Theewaterskloof	0.0	0.0	0.0	0.0	0.0	0.0	0.0	0.0	41.1
Tygerberg	0.0	0.0	0.0	0.0	0.2	0.0	0.0	0.0	47.0
Voëlvlei	0.0	0.0	0.0	0.0	0.0	0.0	0.0	0.0	45.1
Wemmershoek	0.0	0.0	0.0	0.0	0.0	0.0	0.0	0.0	90.3
Wynberg	0.0	0.0	0.0	0.0	0.0	0.0	0.0	0.0	97.8
Notes: *Total/cummulative rainfall for month indicated above									
LT: Long Term									

Accumulated Monthly Rainfall at Wemmershoek

Note: Wemmershoek station used due to long record and mountainous location



Drinking Water Quality

SAMPLE PASS RATE		
Month	Water Quality Compliance (%)	Target (%)
Nov-21	99.11	98
Dec-21	99.09	98
Jan-22	99.04	98
Feb-22	99.04	98
Mar-22	98.99	98
Apr-22	98.96	98
May-22	98.90	98
Jun-22	98.96	98
Jul-22	99.46	99
Aug-22	99.47	99
Sept-22	99.46	99.00
Oct-22	99.47	99.00
Nov-22	99.45	99.00
Dec-22	99.36	99.00
Jan-23	99.36	99.00
Feb-23	99.35	99.00
Mar-23	99.29	99.00
Apr-23	99.24	99.00
May-23	99.24	99.00
Jun-23	99.18	99.00
Jul-23	99.19	99.00
Aug-23	99.14	99.00
Sept-23	99.10	99.00
Oct-23	99.10	99.00
Nov-23	99.04	99.00
Dec-23	99.15	99.00
Jan-24	99.16	99.00
Feb-24	99.12	99.00
Mar-24	99.16	99.00
Apr-24	99.20	99.00
May-24	99.21	99.00
Jun-24	99.26	99.00
Jul-24	99.27	99.00
Aug-24	99.31	99.00
Sept-24	99.33	99.00
Oct-24	99.37	99.00
Nov-24	99.42	99.00
Dec-24	99.42	99.00
Jan-25	99.48	99.00
Feb-25	99.57	99.00
Mar-25	99.61	99.00
Apr-25	99.65	99.00
May-25	99.66	99.00
Jun-25	99.62	99.00
Jul-25	99.69	99.00

This table shows CCT drinking water quality compliance according to the South African National Standard 241:2015. Compliance, measured against all prescribed chemical and microbiological components, consistently exceeds the very high CCT target of 99%. (Overall compliance percentages of continuous sampling and analysis are released on a monthly basis.